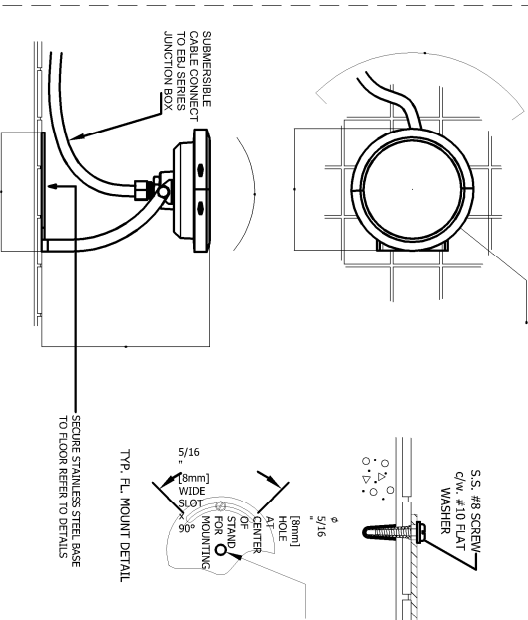


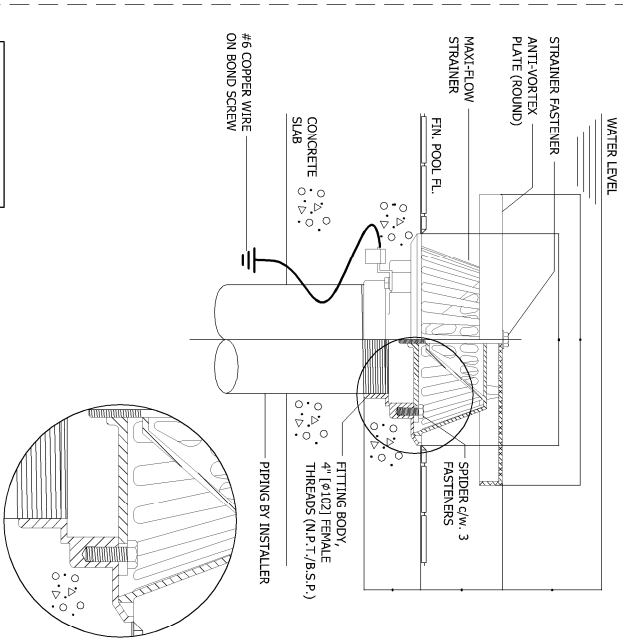
- NOTES:
1. REFER TO FOUNTAIN SPECIFICATION.
 2. REFER TO INSTALLATION INSTRUCTIONS SHIPPED WITH PRODUCT.
 3. OPTIONAL MOUNTING BRACKET KIT, PART# WM108, ORDER SEPARATELY
 4. DO NOT SCALE DRAWING.

REFLEKTOR LED040002-3-4 - MOCOWANIE NA DNIĘ



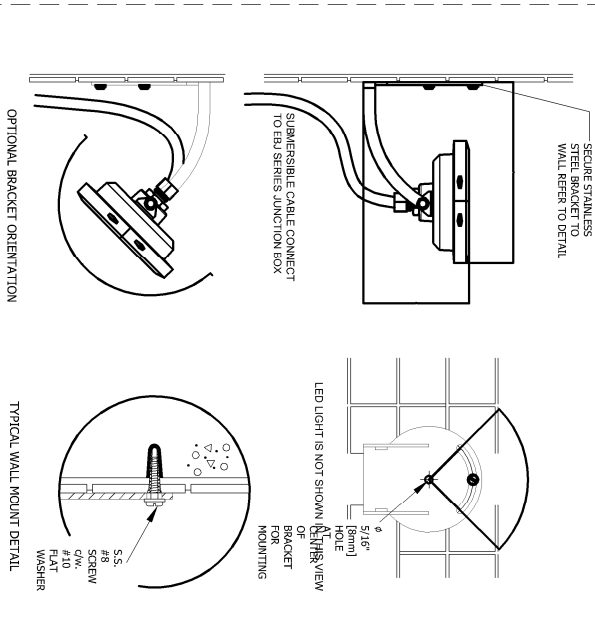
NOT TO SCALE

1. Must be installed by a qualified electrician to comply with local codes.
2. Low voltage fixtures require special attention during design. Cable sizes, conduits and distance to the supply transformer must be calculated to get the correct voltage to the fixture.
3. Refer to full instructions and specifications shipped with product when commencing installation.
4. Refer to fountain specification.
5. Product is CE certified, cETUs listed to safety standards for use in water, offer than in swimming pools and spas.



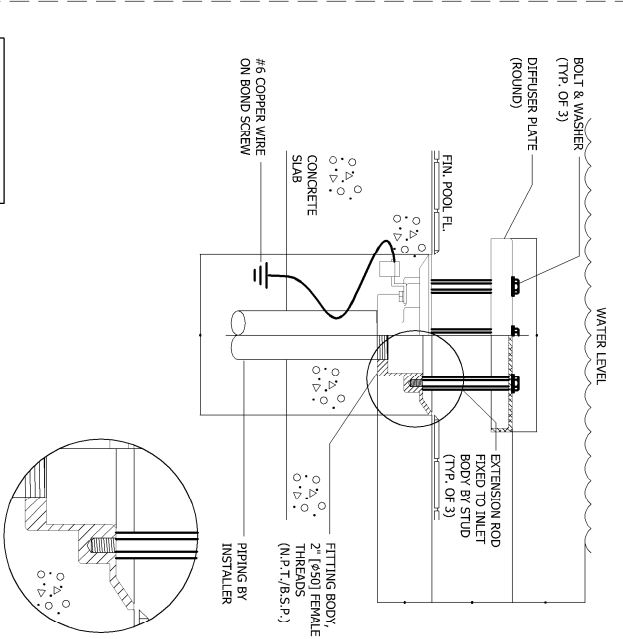
- (1) REFER TO FOUNTAIN SPECIFICATION
- (2) REFER TO INSTALLATION INSTRUCTIONS SHIPPED WITH PRODUCT
- (3) PREVENT THREADED HOLES BEING FILLED WITH DEBRIS
- (4) MATERIALS: BRASS, BRONZE, S.S. FASTENERS
- (5) DO NOT SCALE DRAWING

REFLEKTOR LED040002-3-4 - MOCOWANIE NA ŚCIANIE



NOT TO SCALE

1. Must be installed by a qualified electrician to comply with local codes.
2. Low voltage fixtures require special attention during design, cable sizes, conduit and distance to the supply. Transformer must be calculated to get the correct voltage to the fixture.
3. Refer to full instructions and specifications shipped with product when commencing installation.
4. Refer to fountain specification.
5. Product is CE certified, cULus listed to safety standards for use in water other than in swimming pools and spas.



- NOTES**
- (1) REFER TO FOUNTAIN SPECIFICATION
 - (2) REFER TO INSTALLATION INSTRUCTIONS SHIPPED WITH PRODUCT
 - (3) DO NOT SCALE DRAWING

PROJEKT FONTANNY - DETALE TECHNOLOGICZNE

NAZWA PROJEKTU	
PROJEKT REMONTU PLACU MIEJSKIEGO WRAZ Z MAŁĄ ARCHITEKTURĄ, URZĄDZENIAMI, ZIELENIĄ I UZBROJENIEM TERENU	
ADRES PROJEKTU	
PLAC 3 MAJA, UL. WIGURY, 06-500 MAŁAWA	
INWESTOR	
MIASTO MAŁAWA	
UL. STARY RYNEK 19, 06-500 MAŁAWA	
FAZA PROJEKTU	
PROJEKT WYKONAWCZY	BRANŻA
ARCHITEKTURA	
TYTUŁ RYSUNKU	
PROJEKT FONTANNY - DETALE TECHNOLOGICZNE	
AUTORYT	UPRAWNIENIA
PROJEKTANT	PODPISY
mgr inż. arch. PIOTR KOWALCZYK	NR UPN: 17/POOKX/IV/2014
OPRACOWANIE	
mgr inż. arch. MICHAŁ DĄBROWSKI	
DATA	NR RIS.
12.2016	F6
PROJEKT CHRONIĄCY PRAWA AUTORSKIE	